

# GOVERNMENT

(First published in The Minneapolis Messenger on March 19, 2026)  
IN THE DISTRICT COURT OF OTTAWA COUNTY, KANSAS

WILLIAM R. ALLISON AND  
CARRÉE V. ALLISON, WILLIAM R. ALLISON AND  
CARRÉE V. ALLISON AS TRUSTEES OF THE  
W & C ALLISON FAMILY REVOCABLE TRUST  
DATED SEPTEMBER 9, 2020  
Plaintiff,  
vs.  
KANSAS DEPARTMENT OF REVENUE  
Defendants  
Case No. OT-26 CV 03

**NOTICE OF SUIT**  
(Pursuant to K.S.A. Chapter 60-307)

THE STATE OF KANSAS TO:

Any interested party

You are hereby notified that on the 12<sup>th</sup> day of March, 2026, a Petition to Quiet Title to Personal Property, specifically the address 387 N. Pine Street, Apt C, Gardner Kansas 66030-1615 was filed in the District Court of Ottawa County, Kansas, by William R. Allison and Carree V. Allison, as trustees of the W & C Allison Family Revocable trust, praying for judgment against the above-named defendant and any interested party.

You are hereby required to plead to said Petition on or before the 4<sup>th</sup> day of May, 2026, at 9:00 o'clock a.m., in said Court, at the Ottawa County Courthouse, 307 North Concord, Minneapolis, Kansas. Said hearing shall be by zoom and any party desire to attend should request the appropriate zoom link from either counsel for the Plaintiff or the Clerk of the District Court of Ottawa County. Should you fail to plead therein, judgment and decree will be entered in due course on said Petition.

/s/ William R. Allison  
William R. Allison, Plaintiff

/s/ Carree V. Allison  
Carree V. Allison, Plaintiff

**PREPARED AND APPROVED BY:**

ALLEN & ASSOCIATES LAW, LLC.  
Joseph A. Allen #14705  
Charles C. Lindberg #27466  
C. Richard Comfort #10849  
Alex C. Driskell #27917  
Torrance Parkins #26014  
212 North Concord  
Minneapolis, Kansas 67467  
(785) 392-2105 phone  
(785) 392-3233 fax  
j.allen-law@aatt.net

*Joseph A. Allen*  
Attorney for Plaintiffs

## Commissioner's Desk



By Duane Morris  
Ottawa County Commissioner  
District #3

Please remember this is NOT an official documentation of the minutes, it is meant to be an informative synopsis of County Commissioner activities from my perspective. If you want more information on a subject I mention here I encourage you to read the full minutes of the meetings or watch the video of the meetings online at the Ottawa County Website <https://ks1497.cichosting.com/main/>

Our March 9th meeting began with several representatives from the Fair Board, City of Minneapolis, USD 239, and Rec Commission. Several ideas were discussed, but nothing was decided. The Fair Board shared plans for the 2026 fair and improvements that are made or planned. We need to investigate the possibilities of sharing the cost of the fair with incorporated cities within our county. All residents of our county can benefit from the fair, so it seems "fair" (Pun intended). Costs have gone up tremendously, and we need to investigate more sources to help fund the carnival part of the fair.

The commissioners agreed to a \$1,500 donation to USD 239 2026 project graduation from the Drug and Alcohol abuse fund.

Sara Hodges, Ottawa County Health Department, gave a report that she has received \$36,513.60 in grants for this year, the same amount that was received last year.

Owen Kindall and Katie Vanderhoff from Choose Ottawa County were on hand to give

an update of 2025 accomplishments and goals for 2026. Among the impressive and ambitious goals is to create a video marketing campaign promoting Ottawa County. A resource we have that we haven't been able to take advantage of is the thousands of visitors at Rock City each year. We need to figure out a way to get them to turn left and come into town when they come back to the highway. A new sign for that intersection is in process, maybe that will help people make that "left turn into town" and discover Minneapolis.

Jeff Ebel, Ottawa County Attorney, presented information about implementing a special sales tax. The tax is being considered to support the hospital and/or EMS. My initial reaction is IF a sales tax is passed, it should be directed to the Ottawa County EMS to expand the budget. Karl Leech, EMS Director, was present and added to the discussion, citing how we are currently understaffed in Ottawa County, and because

of low wages offered, we can't hire new people. The newest ambulance in the Minneapolis service area is 2019 and has over 100,000 miles on it. Our pay for EMS personnel is the lowest of our surrounding counties, contributing to the retention problem. I don't like the idea of more taxes, but we have to come up with a plan to increase funding for this vital service, and I think a sales tax would be the fairest way to accomplish this.

We passed a resolution appointing Katherine Paige of Delphos to the Central Kansas Library board. We have been without representation on this board for quite some time. Thank you, Katherine, for stepping up!

I am continuing to gather information on data centers and alternative energy projects. These are quite complicated areas, and we want to look at them from all angles to be certain it's a good fit for Ottawa County.

Thank you for the opportunity to serve you!



-BUILDING SITE PREPARATION -PONDS, TERRACES, WATERWAYS  
-MANURE HAULING & SPREADING -SITE CLEARING TREE REMOVAL  
-BASEMENT EXCAVATION -DIRT & ROCK HAULING

## AUCTION

Saturday, March 28th, 2026 @ 10:00am  
Where: 1879 Frontier Rd, Bennington KS, 67422  
3/4 miles East of the Fire Station on Frontier Rd

- Farm Equipment**—4030 John Deere – w/cab quad range, unknown hours, AC works, newer rubber • New Holland 2550 Swather (hours unknown) operational •348 square baler with farmhand accumulator Farmhand small square grapples X 3 • 12 wheel H&S Rake • Extra wheels for rake • side rake • 3-point spring tooth • 30' folding spring tooth • 12' offset disc • set of JD tractor duals 20.8-34 • 1964 IH grain truck (not running) • 3pt 6' bush hog • 250 gal. 20' pull behind sprayer •7020 Allis Chalmers (not running) • 10' rotary harrow • 1994 Hitchhiker Camper 26' 5th wheel with slide • BBQ's and misc house hold items on this sale
- Shop Equipment/Trailers** – Big Tex gooseneck tandem dual 34' trailer, Shop Built gooseneck 24' triple axle dovetail trailer with ramps and winch • 8 bale Red Rhino bale trip trailer, PJ 20' bumper hitch bobcat trailer. 5x12 bumper trailer with winch ~ homemade 6 bale hay trailer X2 Shop equipment/Misc. • Craftsman upper and lower tool box, metal lower and upper cabinets, metal work benches, metal saw horses, vice on stand • Peter Wright 1-3-21 Anvil • hand tools • ladders • Grease guns • Snap-On MM250 wire welder • Miller stick welder • Mr. Heater and small propane heaters • Chains and boomers • Battery charger • generators • gas garden tiller • Antique saws & Wood Working tools • Welding trailer with Lincoln welder, toolbox and bottle set with gauges • Misc shovels & pitchforks • picnic tables • Dual wheel bench grinder • Compound Miter Saw • Red iron trusses • used galvanized barn tin • loads of scrap iron • Drill press • Vertical band saw • fuel barrels • 20 and 200 gallon transfer fuel tanks with pumps • GM 307 motor and auto transmission • antique tractor seats • kerosene lanterns • Torch cart • Small torch set • toolboxes • air bubbles • gas air compressor • electric air compressor • numerous fishing tackle • many other items and consignment items • Fencing • 16 continuous panels • misc. portable panels • 100+ used T-posts barbed and barbless wire • electric fence wire
- 2022 T770 Bobcat**— 2 Speed • 1600 hrs • new tracks, sound package • Heat/AC Joysticks (SJC) • BOBCAT Attachments: Smith Tree Saw, Smith 84" Grapple, Danuser Tree Puller, Kansas Klipper Tree Sheer, Disc Style Tree Mulcher, Farmhand Hay Grapple, 84" Tooth Bucket, 84" Smooth Bucket, Pallet Forks, 15C Auger with 10" bit, Gin Pole



Scan Me

Cash or Check ONLY

Seller: Gary Burt

Ray Swearingen - Broker 785-452-8498  
Auctioneer - Brady James & Byron Bina

**HORIZON**  
FARM & RANCH REALTY, LLC  
1-888-825-1199  
[www.horizonfarmranch.com](http://www.horizonfarmranch.com)

## Central Kansas Partners Launch Walk Kansas to Promote Active Lifestyles

Central Kansas Extension District is excited to announce a new partnership with the Ottawa County Health Center's Wellness Center, creating expanded opportunities for community members to stay active during the upcoming Walk Kansas program. Through this collaboration, registered Walk Kansas participants will have access to the fitness facilities at the Ottawa County Health Center's Wellness Center throughout the eight-week program.

Participants will be able to use the Wellness Center's fitness area, including treadmills, cardio machines, and weight equipment, providing additional options for staying active when weather or schedules make outdoor activity challenging.

Walk Kansas is a popular eight-week health initiative through K-State Extension that encourages individuals and teams to build healthier habits through regular physical activity. Participants track walking, strength training, and other forms of exercise while supporting one another in reaching movement goals.

"The Walk Kansas program is all about helping people find realistic and enjoyable ways to move more," said Lisa Newman,

family and community wellness extension agent with K-State Extension. "We're incredibly grateful to the Ottawa County Health Center for partnering with us to offer this opportunity. Having access to the Wellness Center provides another welcoming space for participants to stay active, motivated, and connected."

According to the Physical Activity Guidelines for Americans, adults should aim for at least 150 minutes of moderate-intensity physical activity each week, or 75 minutes of vigorous activity, along with muscle-strengthening activities at least two days per week. Walk Kansas helps participants work toward these recommendations by encouraging consistent movement and healthy lifestyle habits.

The Ottawa County Health Center's Wellness Center offers a

convenient local option for residents who want to incorporate strength training and indoor cardio into their weekly activity routine. This partnership supports the shared goal of improving community health by making physical activity more accessible for residents across Ottawa County.

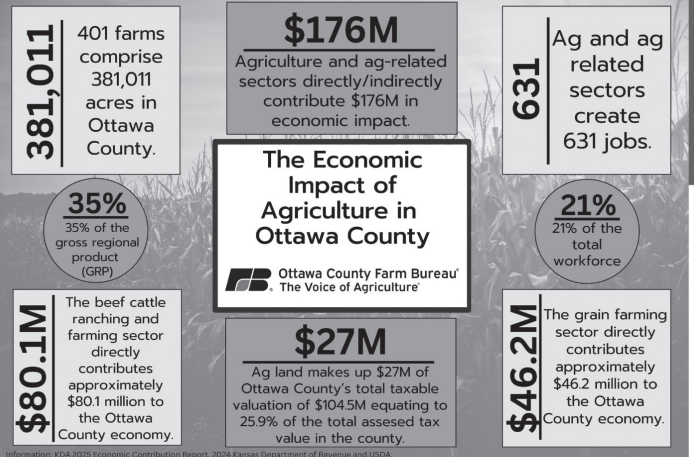
Walk Kansas welcomes individuals, families, and workplace teams to participate. The program runs for eight weeks and focuses on building sustainable habits that can continue long after the challenge ends.

For more information or to register for Walk Kansas, visit <https://www.walkkansasonline.org>.

To learn more about the Ottawa County Health Center Wellness Center, visit <https://www.ottawacountyhealthcenter.org/wellness-center>.

## CELEBRATE NATIONAL AG DAY

MARCH 24, 2026



America's farmers are committed to providing food, fiber & renewable resources for the growing population. Learn more about how, along with the country's farmers, together we grow!  
[www.agday.org](http://www.agday.org)

**Ottawa County Farm Bureau**  
The Voice of Agriculture



**Ottawa County General Public TRANSPORTATION**  
"First come, first served."

HOURS: Monday - Friday 8 A.M. to 5 p.m. | (785) 392 - 2822

This project funded in part by the KDOT Public Transit Program.