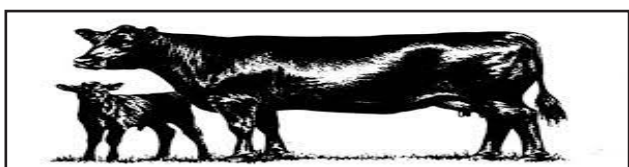


Legals

(First published in The Oakley Graphi on May 7, 2026)

The City of Oakley Police Department will sell at public auction, the following vehicles which have been abandoned in the City Of Oakley. To claim, the owner must claim priot to sale and pay for the removal, storage, towing and publication, and other costs incurred.

A 2002 Subaru Gold in color VIN: JF1SF63502H736674 Owner: Osnier Joel Hernandez Gonzalez PO Box 603 Dillon, CO. 80435	San Antonio, TX. 78227 2004 Ford F-150 VIN: 1F1TPX1459NB74101 Jesus Campos 129 Center Ave Oakley, KS. 67748
2010 Mercury VIN: 4M2CN8H70AKJ11341 Quintana Silva Moises 7031 Brownleaf	2004 Ford Windstar VIN: 2FMDA5142WBB41233 Jesus Campos 129 Center Ave Oakley, KS. 67748
	1997 Dodge Dakota VIN: 1B7GG23Y9VS242479 Wade Fredrick Harvey 430 W 2 nd St Grainfield, KS. 67737
	2001 Saturn VIN: 1G8JU52G01Y548648 Shannon L. Fune 601 W 1 st St Trenton, NE. 69044
	Daniel W. Cooper Chief of Police



U.S. 183 Bridge Repair to Start in Ellis County

A bridge repair project along U.S. 183 in northern Ellis County is expected to begin on or about Monday, May 4.

The Kansas Department of Transportation project will improve the surface and substructure of the bridge carrying U.S. 183 over the Saline River, located 14 miles north of Hays.

Traffic will be reduced to one lane through the work zone and directed by temporary traffic signals. Motorists should expect minor delays of up to five minutes.

Project work is expected to be completed in early August, conditions permitting.

Reese Construction, of Salina, is the primary contractor for the nearly \$400,000 project.

KDOT urges motorists to stay alert and follow posted signs in all work zones. For current road conditions, visit KanDrive.gov or call 511. For updates on highway projects in northwest Kansas, visit ksdot.gov/NorthwestNews.

Building Better Wheat: WGRC Advances Genetic Research Efforts

Researchers, industry leaders and public partners gathered at the Kansas Wheat Innovation Center last week for a Wheat Genetics Resource Center (WGRC) meeting focused on reviewing the next wave of wheat research. The session featured 11 project proposals from six universities, covering priorities such as drought tolerance, virus and pest resistance, grain quality and even gut microbiome research. In a format similar to a wheat research “Shark Tank,” scientists presented their ideas to an Industry Advisory Board, receiving feedback from more than 50 participants representing industry, universities and federal agencies. As industry members and WGRC leadership evaluate which projects will advance to the final proposal stage, the process emphasizes coordination, budget efficiency and collaboration across regions, helping ensure grower investments are used strategically to deliver practical results.

The [Wheat Genetics Resource Center](#) at Kansas State University is a public-private research consortium that mobilizes genetic diversity from ancient and wild wheat relatives and integrates that diversity into modern breeding pipelines to deliver novel traits to farmers’ fields. These traits that are not existing in modern wheat varieties reduce input costs, increase yields and offer value-added opportunities to growers. The WGRC protects the future of wheat and is a long-term effort to battle against pests, disease and extreme weather events facing growers in the Great Plains Region.

“The WGRC is a unique consortium bringing together public and private resources and incredibly talented researchers, and provides a training system for future research leaders to safeguard and increase the value of wheat,” said Will Zorrilla, Managing Director of WGRC.

The WGRC Industry Advisory Board is made up of growers from Colorado, Nebraska, Kansas and Texas; seed industry members from Corteva, Bayer CropScience and Kansas Wheat Alliance; and milling companies Ardent Mills and Bay State Milling. Representatives from the Foundation for Food and Agricultural Research also participated in the most recent WGRC meeting. Industry members pool funding to support pre-competitive projects designed to deliver valuable genetics to breeding programs and ultimately wheat growers.

The Objectives of the Wheat Genetics Resource Center/Consortium are as follows:

Align research priorities through strong industry-academic collaboration.

Engage industry partners to define shared needs and co-develop a pre-competitive research agenda that guides investments and ensures relevance across the wheat value chain.

Accelerate genetic discovery and trait development.

Identify, map and validate high-value genes and alleles from wheat relatives and exotic germplasm, advancing

them toward breeder-ready forms using modern genomics and cytogenetics.

Rapidly introgress priority traits into elite germplasm.

Apply advanced breeding approaches to shorten the path from discovery to deployable germplasm.

Translate research outputs into measurable industry impact.

Ensure timely delivery of improved germplasm, validated markers, datasets and technical resources to consortium partners, supporting commercial breeding and product-quality goals.

Researchers at the WGRC focus heavily on identifying genes that improve wheat’s resilience. This includes resistance to viral, bacterial and fungal diseases, as well as insect pests and environmental stresses such as drought or heat. Once identified, those genes are transferred into agronomically useful breeding lines and deployed for use by breeders.

Beyond resistance traits, the WGRC studies the genetic basis of yield, grain quality and plant physiology. Using advanced tools such as diagnostic assays, gene cloning and plant transformation, scientists are able to better understand how specific traits function and how they can be improved.

The center also played a key role in mapping the wheat genome, a milestone achieved in 2018, which continues to shape modern breeding

efforts. By developing detailed chromosome and genetic maps, researchers have created a roadmap that helps breeders more precisely identify and select for desirable traits, accelerating the development of improved wheat varieties.

“It is the key to permitting efficient, real-time integration of relevant genetics, making the selection process more efficient—it’s a turbocharger for wheat breeding!” said Allan Fritz, Kansas State University professor and wheat breeder.

Collaboration is central to the WGRC’s impact. It has established national and international research networks that coordinate genetic studies in wheat, ensuring discoveries are shared and applied across regions and production systems.

For Kansas wheat farmers, that upstream work translates into real-world results. Stronger varieties, improved disease resistance and better performance under stress all trace back to the kind of foundational research conducted at the WGRC.

While much of the work happens in laboratories, greenhouses and field plots, its impact reaches far beyond campus. By investing in genetic resources and scientific discovery, the WGRC helps secure the long-term productivity and competitiveness of wheat production in Kansas and around the world.

To learn more about the WGRC, visit wgrc-ucrc.k-state.edu.



Old Crowe Construction LLC
FACEBOOK.COM/
OLDCROWECONSTRUCTION/
(785) 787-4754

SERVING OAKLEY KS AND SURROUNDING
AREAS SERVING NORTHWEST KANSAS

Elmer Crowe
OWNER

KANSAS STATE UNIVERSITY

RESEARCH AND EXTENSION

EXTENSION AGENT, AGRICULTURE & NATURAL RESOURCES opportunity in Golden Prairie District. Primary office in GRAINFIELD, KS. See extension.ksu.edu/about/careers to learn more and apply. Application deadline: 5/18/26. Kansas State University is an EOE of individuals with disabilities and protected veterans. Background check required.

Kansas Farm Bureau continues to honor mental health advocates with Rural Minds Matter awards; increases award amount

May is Mental Health Month, and Kansas Farm Bureau (KFB) remains committed to supporting farmers, ranchers and other rural residents facing stress through resources available at www.kfb.org/ruralmindsmatter.

Building on the last two years of success, KFB is again recognizing outstanding mental health advocates with the Rural Minds Matter Advocate of the Year and Young Advocate of the Year awards. This year, the award is increasing to \$2,000 per winner, demonstrating a continued dedication to strengthening mental health support in rural communities and recognizing individuals who are making a meaningful impact.

“We are proud to recognize the dedication of those working to break the stigma surrounding mental health in rural areas,” says Joe

Newland, KFB president. “Their efforts are instrumental in fostering awareness, support and change, and we are honored to celebrate their contributions.”

In rural regions, access to mental health resources can often be limited, making the advocacy of individuals particularly crucial. By destigmatizing mental health, raising awareness and implementing inclusive strategies, these advocates play a pivotal role in fostering improved well-being within their communities.

The Rural Minds Matter Young Advocate of the Year award celebrates the outstanding efforts of individuals aged 18-35 who have demonstrated exceptional advocacy for mental health awareness and support within rural communities across Kansas. This award recognizes the significance of empowering this generation to address mental health challenges effectively.

Similarly, the Rural Minds Matter Advocate of the Year award honors individuals above 35 who have exhibited remarkable dedication and leadership in advocating for mental health awareness and support within rural Kansas communities. This award underscores the substantial impact that experienced advocates have in addressing mental health stigmas and promoting access to resources and

services in rural areas.

The selected recipients of both awards will receive:

Recognition: The Rural Minds Matter Advocate of the Year award will be presented at KFB’s Annual Meeting and the Rural Minds Matter Young Advocate of the Year award will be presented at the Young Farmers and Ranchers Conference. Both events are in Manhattan.


Visibility: Articles will be written about their mental health advocacy contributions to appear on www.kfb.org/ruralmindsmatter and [www.kansaslivingmagazine.com](http://kansaslivingmagazine.com).

Support: Winners in each category will receive a \$2,000 cash prize to further their advocacy efforts.

Nominations or applications for the awards require detailed information about the nominee’s involvement in mental health advocacy, challenges they’ve overcome, awareness-raising efforts, destigmatization strategies, collaborative initiatives, impacts, leadership qualities, recognitions received, testimonials and reasons for nomination. The deadline to submit applications is July 17.

For more information about the Rural Minds Matter awards and Kansas Farm Bureau’s mental health initiatives, please visit www.kfb.org/ruralmindsmatter. Copyright © 2026 Kansas Farm Bureau, All rights reserved. News from Kansas Farm Bureau

Be Wise...



ADVERTISEMENT

USD #274 Oakley is seeking two individuals to fill unexpired terms on the Recreation Commission Board.

One term expires September 30, 2027
One term expires September 30, 2028

Interested individuals may pick up an interest form at the District Office, 621 Center Ave., Ste. 103. Completed forms must be returned no later than 12:00 p.m. on Monday, May 11th.